

An abstract painting with thick, expressive brushstrokes. The top half features warm, blended tones of pink, orange, and yellow. The bottom half is more complex, with horizontal bands of yellow, white, and dark purple, interspersed with vertical strokes of orange and black. The overall effect is one of dynamic energy and layered textures.

Mike Staniford

Unseen Landscapes

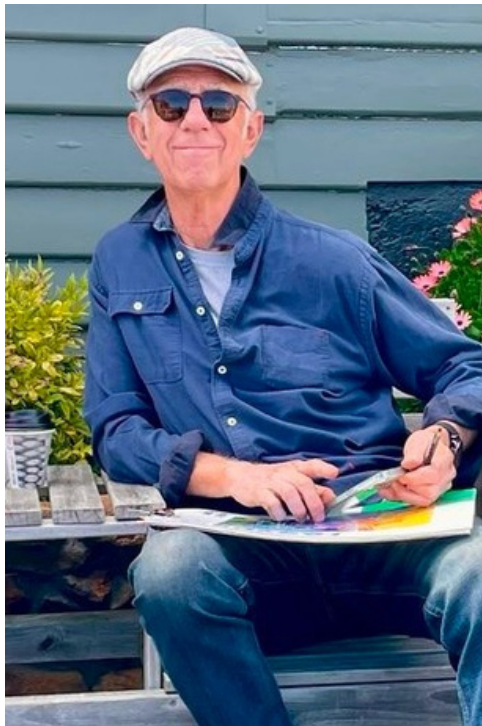
Working Dog Gallery 1-11 May 2025



Mike Staniford

Unseen Landscapes

Working Dog Gallery 1-11 May 2025



Unseen Landscapes

“The landscapes I have in mind are not part of the unseen world in a psychic sense, nor are they part of the unconscious. They belong to the world that lies, visibly about us. They are unseen merely because they are not perceived; only in that way can they be regarded as invisible.” Paul Nash

I invite the viewer to look beyond the immediate, and into the vast, sweeping horizons that stretch out to the edges of perception. My paintings evoke the sense of magnitude found in the landscapes I grew up exploring on Dartmoor. Traveling now with my sketchbook in remote Australian wilderness, I am still struck by that sweep of unbroken expanse—vastness that is both grounding and infinite. Each wide plateau, gorge or distant hilltop, reveals the subtle interplay of distance and space. These are landscapes where tracks, broken fences and the marks of human intervention play an important part in forming an identity of place. I have ventured up mountain paths, along rutted farmland tracks, across rolling plains, and beside deep rivers, backed by dense forest. If I haven’t drawn a place, I haven’t really seen it.

The geometry of landscape is central to my practice. I’m intrigued by the way perspective and vanishing points jostle and compete with one another. In larger scale panoramas, these perspectives fragment into disrupted geometric shapes. The play between horizontals, verticals, and diagonals offers a kind of musical rhythm, where one line guides the eye to a distant corner, while another takes a more serpentine path. The flatter planes of this landscape, punctuated by competing vanishing points, pushes me into an ongoing dialogue between space and form. It’s in these layers—whether organic or geometric—that the heart of my work lies.

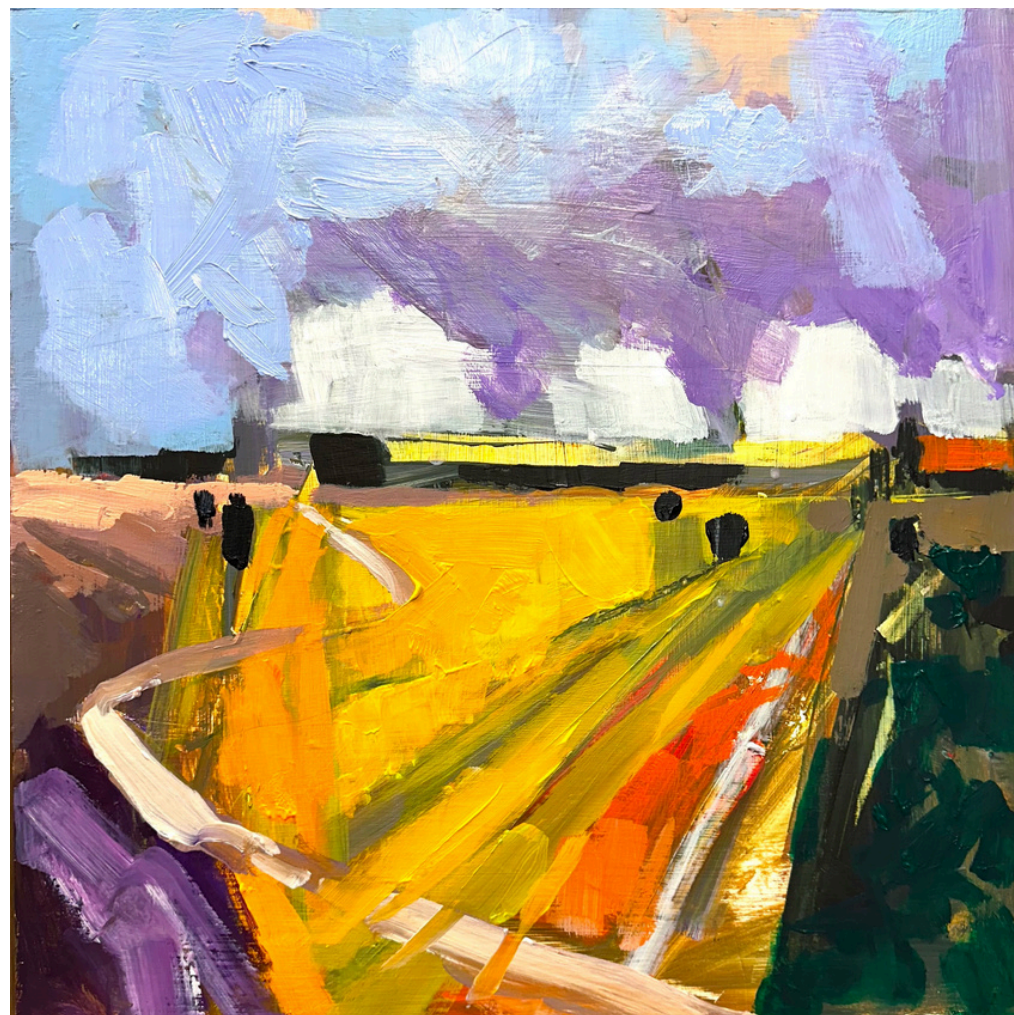


Steps Beyond The Horizon

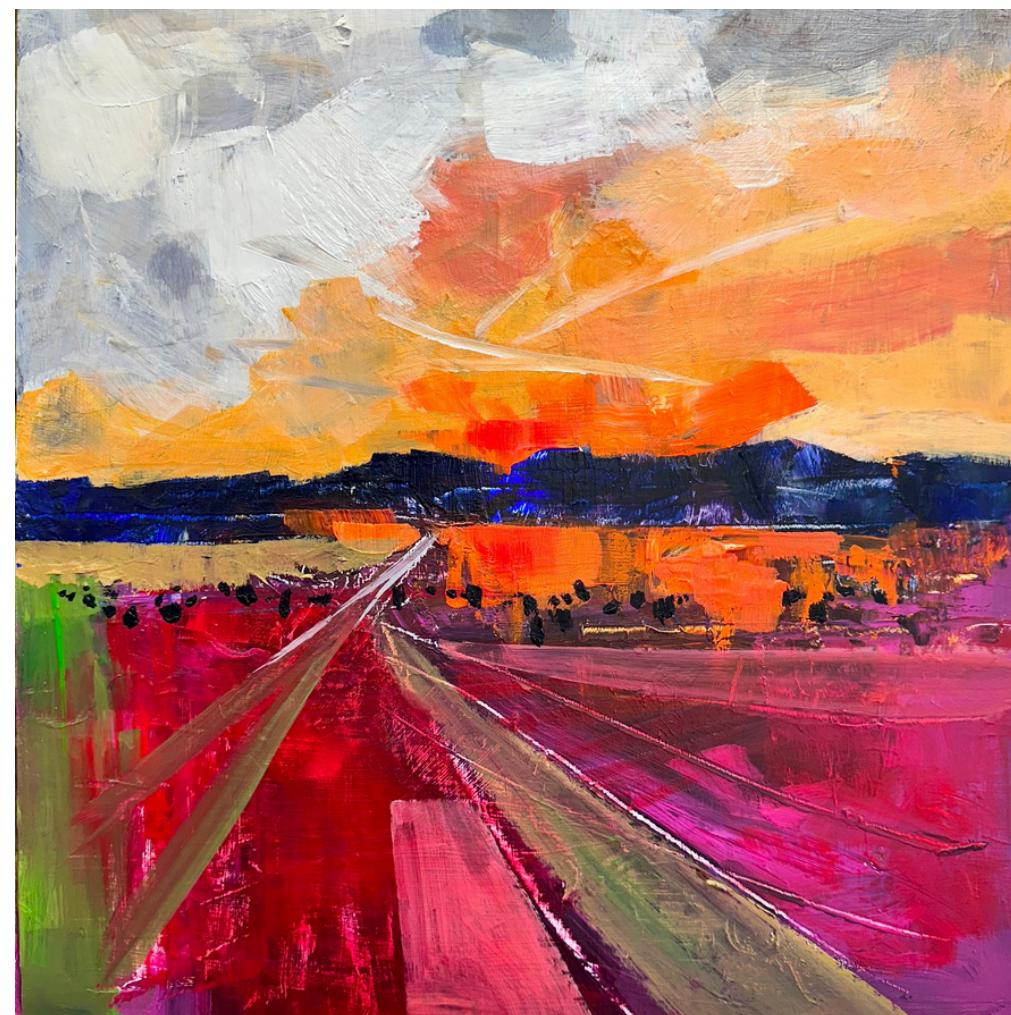
Acrylic on canvas

102 x 102cms Unframed

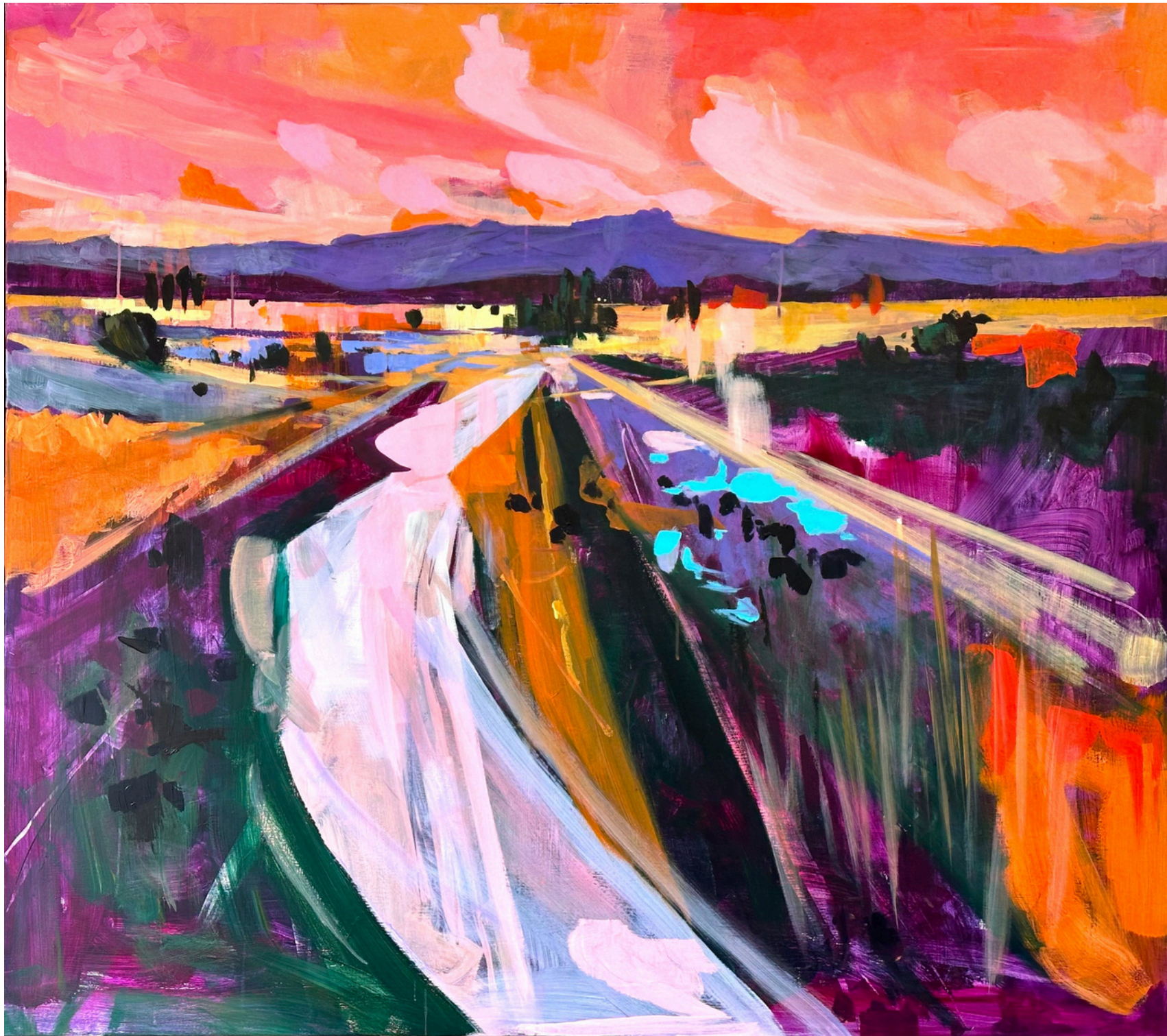
\$4,750



Golden Traces, Silver Light
 Acrylic on board
 43 x 43cms Framed
 \$1,500



Drifting Towards Dawn
 Acrylic on board
 43 x 43cms Framed
 \$1,500



Stillwaters

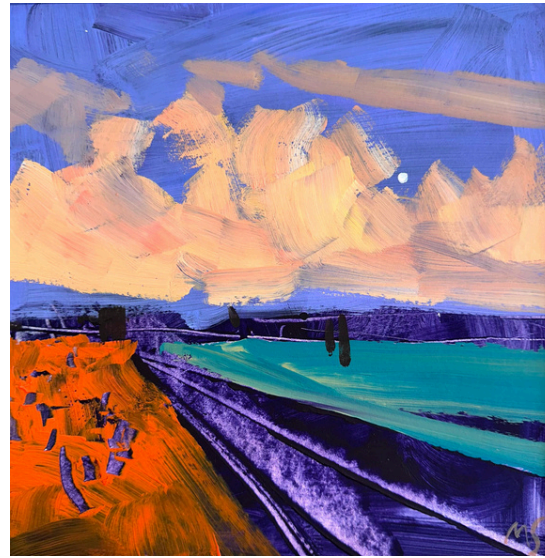
Acrylic on canvas

123 x140cm Framed

\$6,000



A Path Forward
Acrylic on paper
24 x 24cms Unframed
\$600



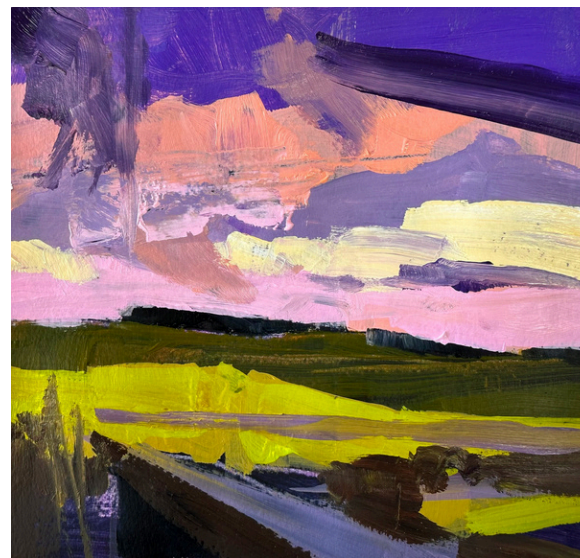
Guiding Moon
Acrylic on paper
24 x 24cms Unframed
\$600



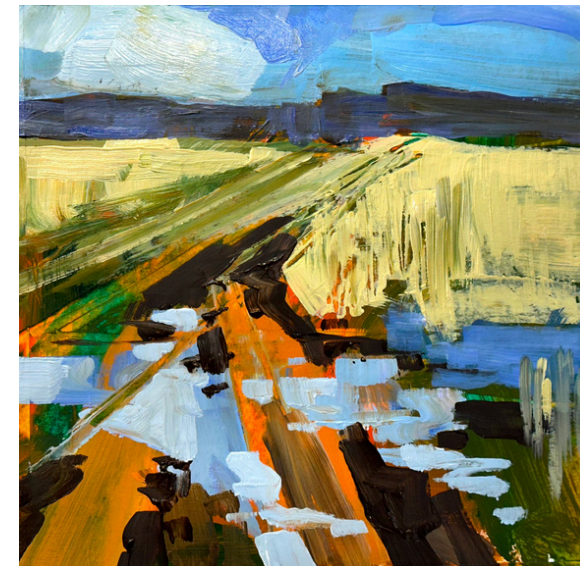
Up And Away
Acrylic on paper
24 x 24cms Unframed
\$600



Glimpse Of Gold
Acrylic on paper
24 x 24cms Unframed
\$600



Tomorrow So Close
Acrylic on paper
24 x 24cms Unframed
\$600



Unseen Highway
Acrylic on paper
24 x 24cms Unframed
\$600



Evening Afterglow
Acrylic on canvas
123 x 123 cms Unframed
\$5,500



Framed by Nature
Acrylic on board
43 x 53cms Framed
\$1,650



Silent Tracks, Open Roads

Charcoal on paper

55 x 85cms Framed

\$1,700

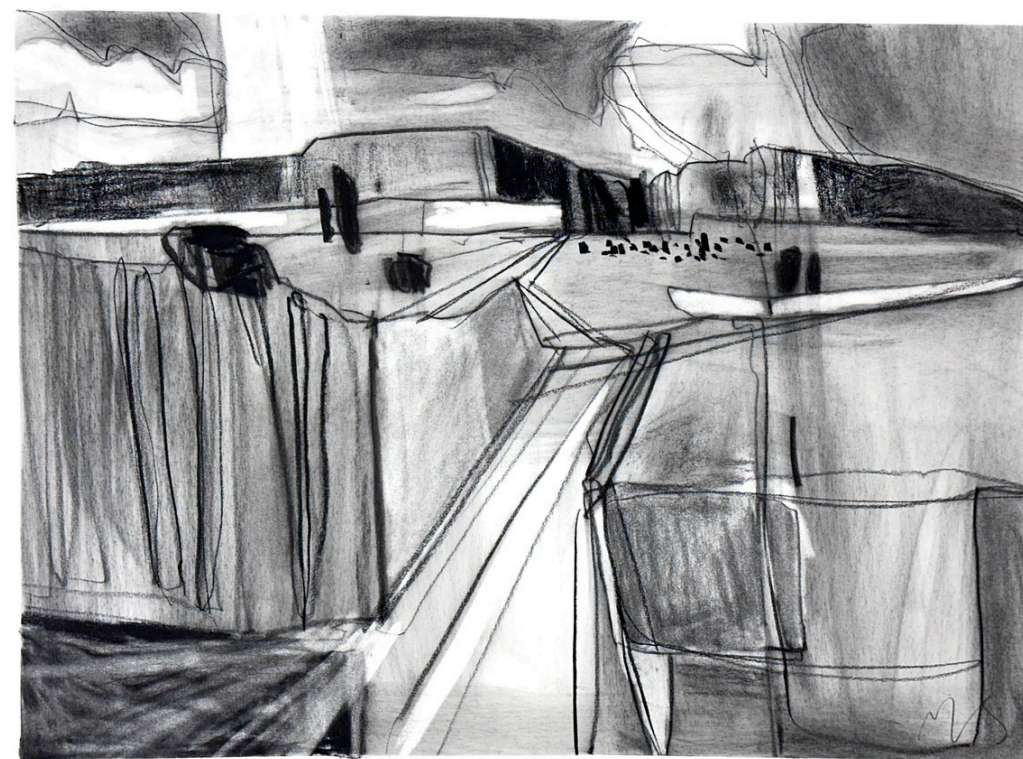


Navigating By Light

Charcoal on paper

72 x 71cms Framed

\$1,800



Pathways To Light

Charcoal on paper

56 x 70cms Framed

\$1,500



Shadows Drift, Light Remains

Acrylic on board
43 x 53cms Framed
\$1,650



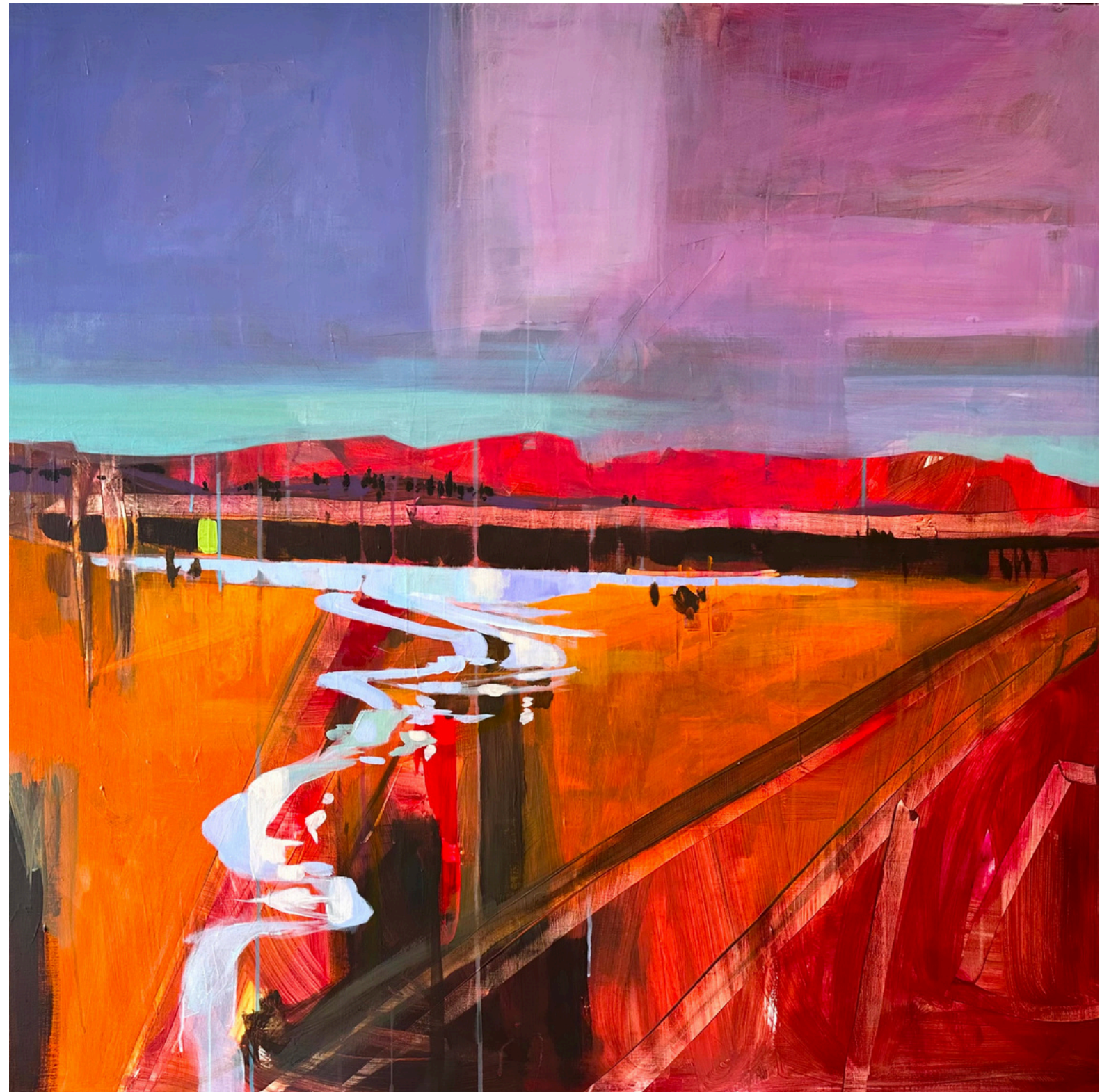
Earthmarks

Acrylic on canvas

102 x 102cms Framed

\$4,750

Whispers Of A New Day
123 x 123cms Unframed
Acrylic on canvas
\$5,500





Invisible Threads
43 x 43cms Framed
Acrylic on board
\$1,500



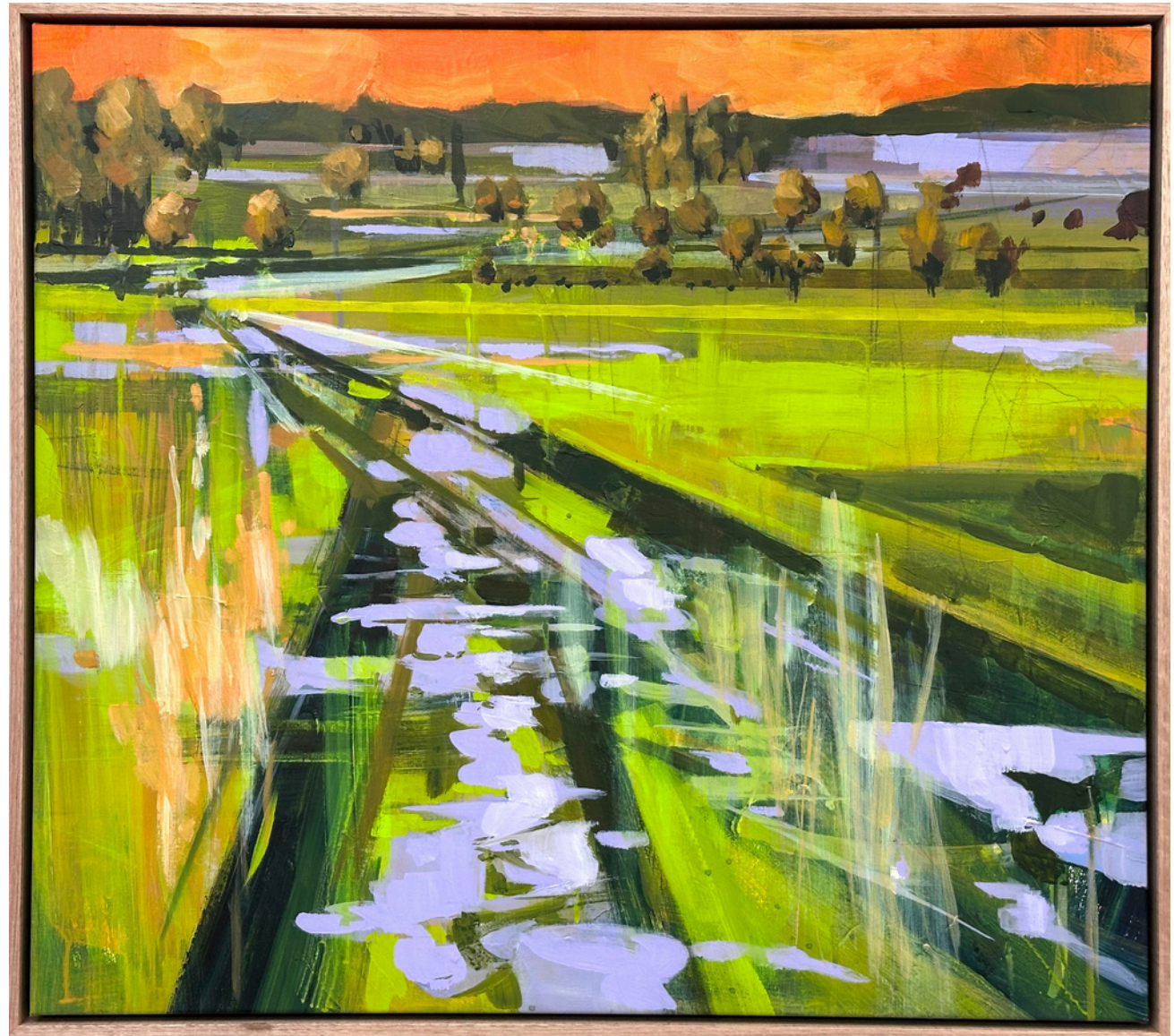
Tracks To The Lake
Acrylic on board
43 x 43cms Framed
\$1,500



Sweeping Land
Acrylic on board
43 x 53cms Framed
\$1,650



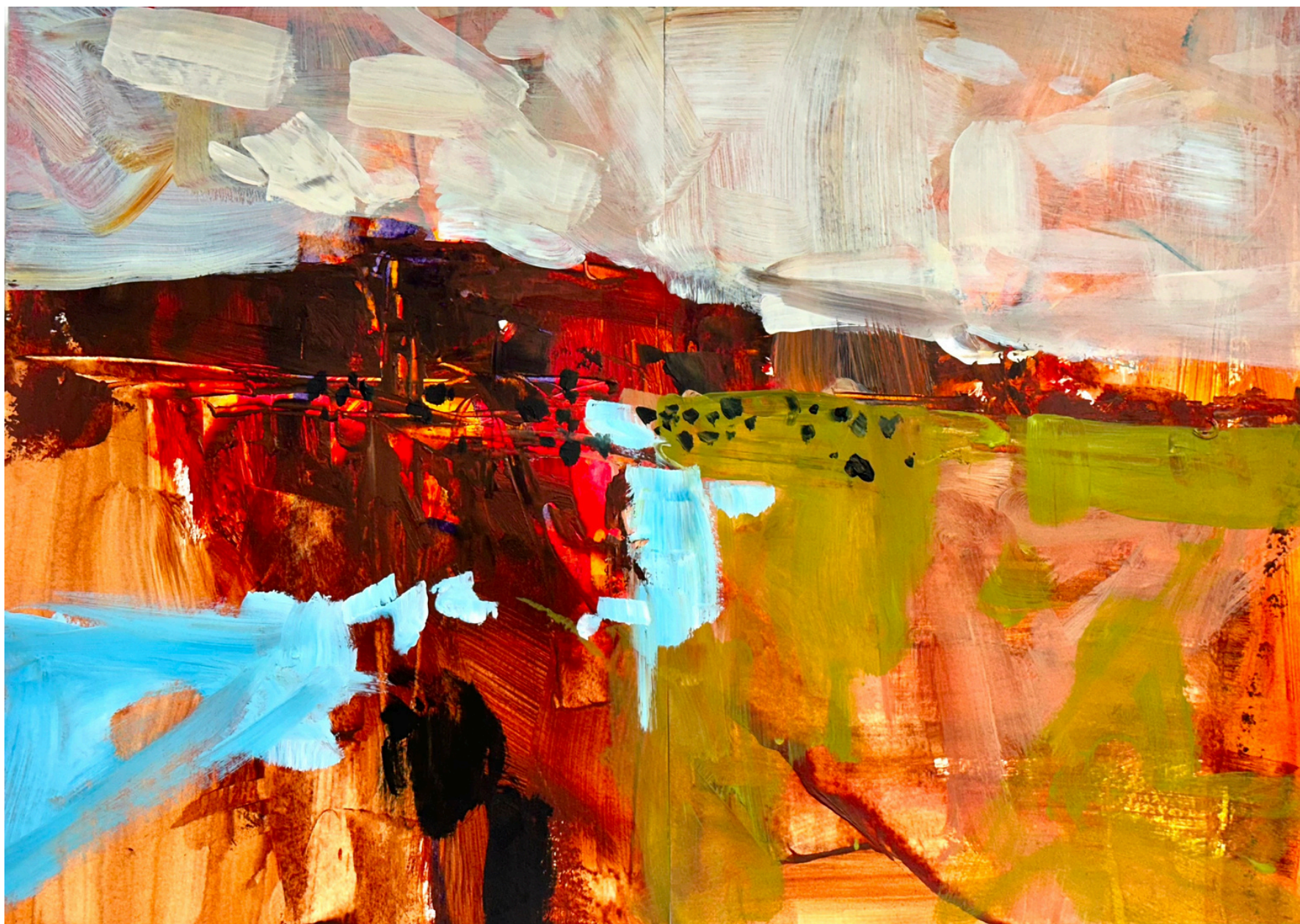
Song To The Free
Acrylic on board
43 x 53cms Framed
\$1,650



Take Life As It Comes
Acrylic on canvas
59 x 66cms Framed
\$2,900



Where The Light Leads
Acrylic on joined paper
56 x 71cms Framed
\$1,900



Soft Echoes Of The Sky
Acrylic on joined paper
62 x 79cms Framed
\$1,900





The Journey Begins

Acrylic on canvas

63 x 63cms Framed

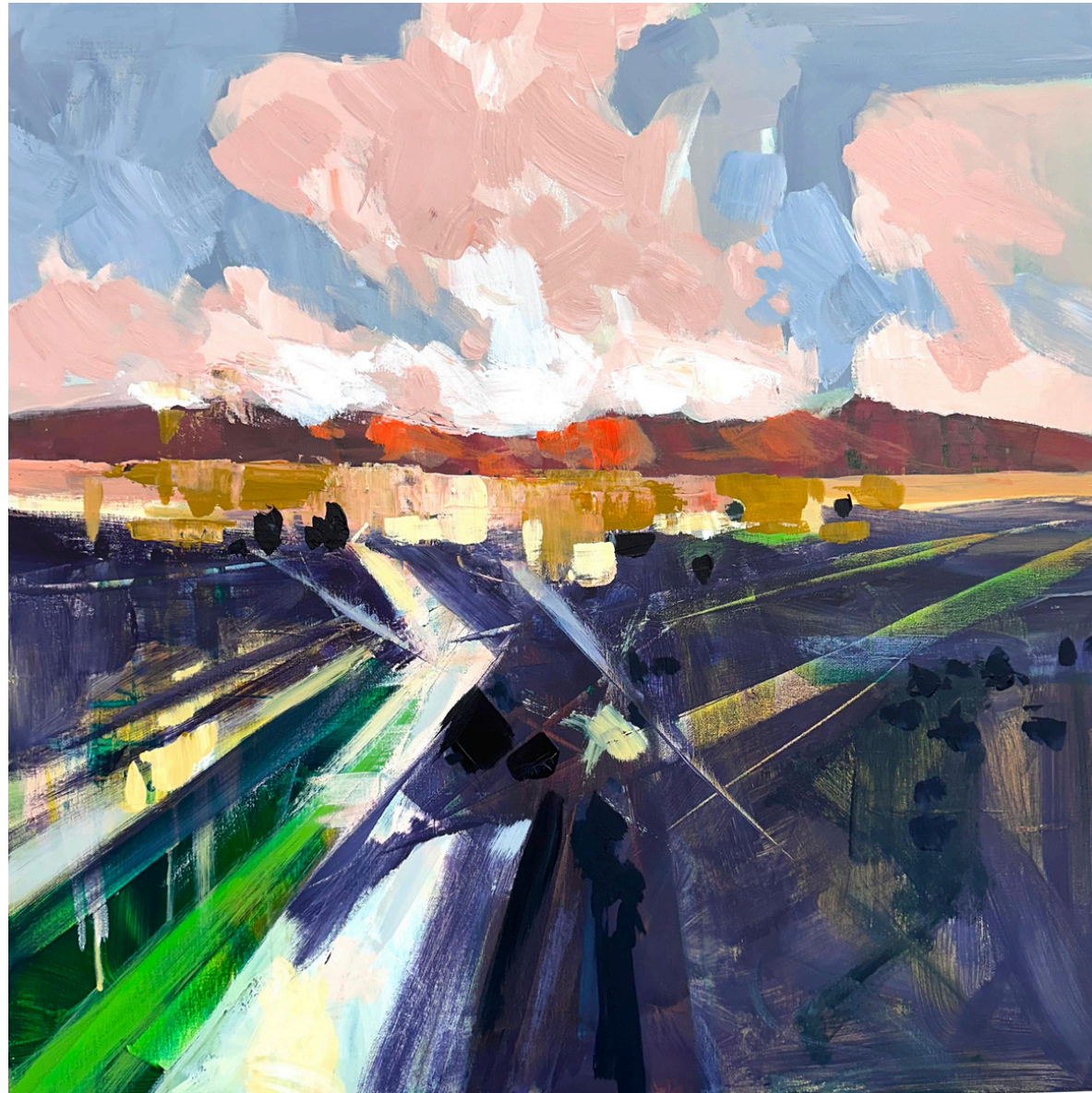
\$2,900



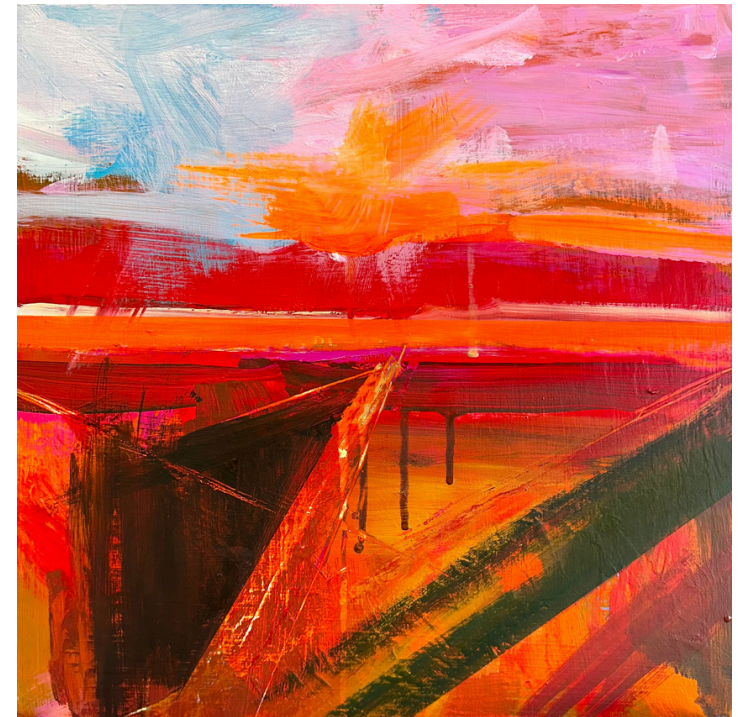
The Language Of Rain
Acrylic over mono print on paper
62 x 79cms Framed
\$1,900



Forging A New Path
Acrylic on joined paper
62 x 79cms Framed
\$1,900



On Track
Acrylic on canvas
63 x 63cms Framed
\$2,900



Guiding Light
Acrylic on board
43 x 43cms Framed
\$1,500



Waymarkers In The Wind

Acrylic on board

33 x 43cms Framed

\$1,300



Moments Turn To Hours
Acrylic on canvas
63 x 63cms Framed
\$2,900



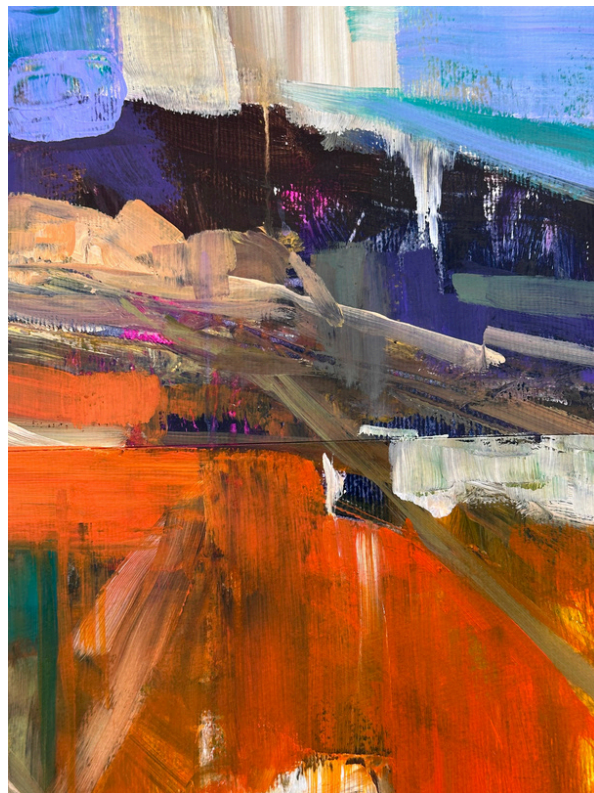
Unwritten Horizons

Acrylic on board

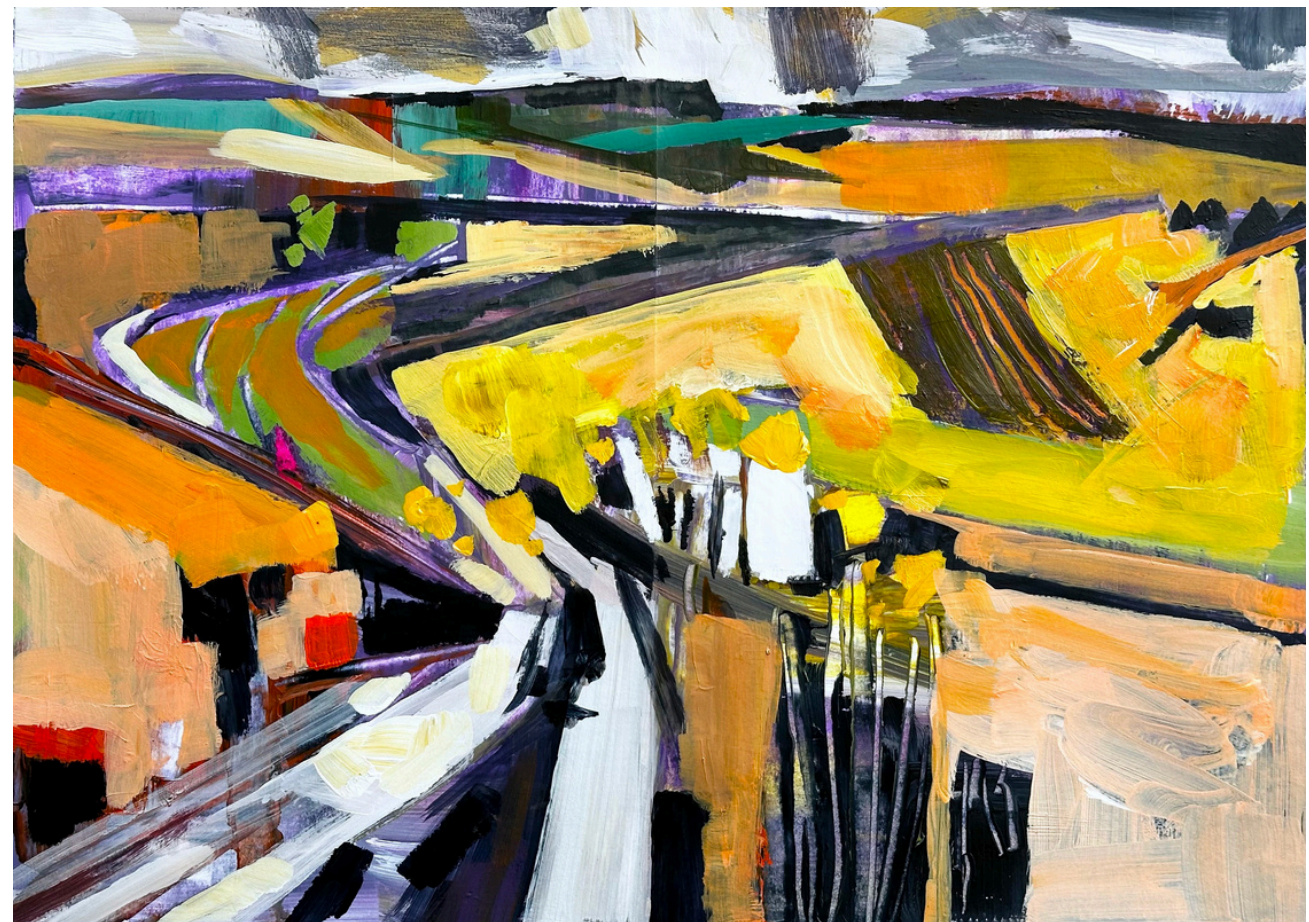
43 x 53cms Framed

\$1,650

The following works on paper are unframed and available at the gallery



Beneath The Surface
41 x 35cms
\$850



Hints Of The Future
36 x 50cms on joined paper
\$1,500

The following works on paper are unframed and available at the gallery



After The Rains
32 x 44cms On joined paper
\$1,200



Horizons Gentle Call
26 x 30cms
\$660



Clifftop Whispers
30 x 41cms
\$950

All sales enquiries to the artist

Mike Staniford

mikestaniford@icloud.com

+61 414 530 556

Find me online:

mikestaniford.com

@mikestaniford

Paintings are all framed in natural Tasmanian Oak, unless listed unframed. All prices are in Australian dollars.

Payment can be made via credit card, direct bank deposit or PayPal. Shipping quote on request



Unseen Landscapes

Working Dog Gallery 29 April -11 May 2025 Tuesday - Saturday 10am - 5pm