

An abstract painting with a vibrant color palette of teal, purple, yellow, and dark blue. The composition features stylized, dark, vertical shapes that resemble plants or trees in the foreground and middle ground. A waterfall-like element is visible on the left side, cascading down. The background is a mix of light teal and yellow, suggesting a sky or a distant landscape. The overall style is expressive and textured, with visible brushstrokes.

Moments in Time

Mike Staniford

ME Artspace and online 31 August - 12 September 2021

“Capturing a specific moment in time is what attracts me to any given landscape, the impermanence of light, made uncertain by shifts in the weather.”

MIKE STANIFORD

Moments in time

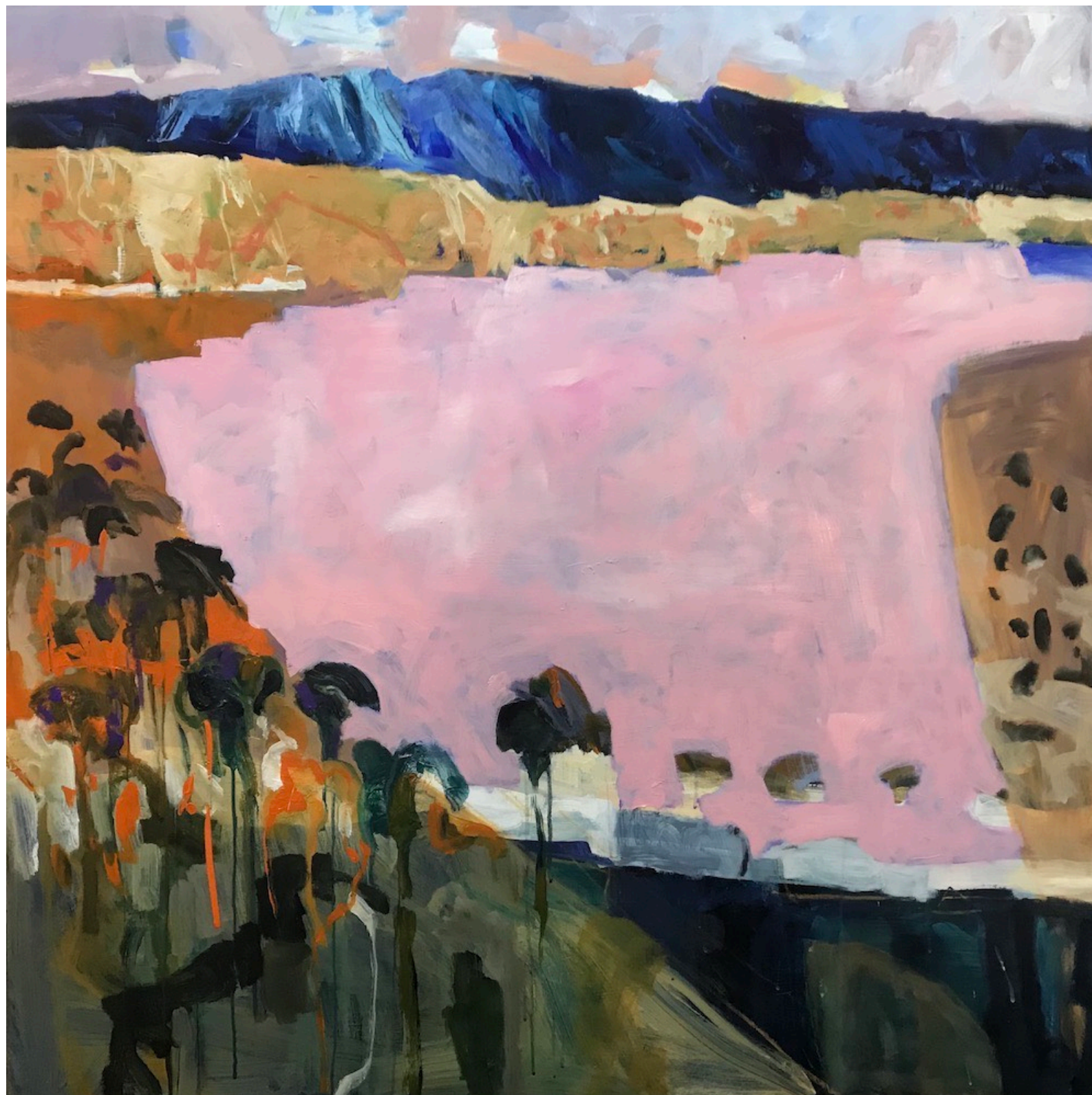
Drawings form the back story to all Mike Staniford's paintings - "If I haven't actually drawn a place, recorded it in my mind with mark making, then I don't feel I've really been there".

He might visit favourite locations with his paints time after time, but even the most familiar place can, and should reveal surprises on each and every visit. The changing light, time, seasons and weather, mean things will never be exactly the same. "Capturing a specific moment in time is what attracts me to any given landscape, the impermanence of light, made uncertain by shifts in the weather." Mike is drawn to the quiet calm of a silvered reflection, the mirrored light over the bay as herons forage in the shallows, the resilience of weathered coastal rocks and the hour of silence as the sun fades behind a solitary tree.

Each of us brings our own memories to a landscape painting, whether painter or viewer. The way we see things, our childhood experiences, our past knowledge (or lack of it), what it reminds us of. Mike allows space for a personal interpretation - what is left out is as important as what goes in.

Observing with all five senses, he begins by drawing himself into the landscape, editing out the superfluous and boldly exaggerating reality. Working quickly on paper outside, the magnetism of the landscape entralls him; whether it be a glimpse of a violet ocean, or a family of boulders tumbling towards the bay, or even a solitary tree clinging to the cliff face, determined to hang on. These drawings, paintings and powerful memories form his very personal back story and allow him to convey his own interpretation of nature.





Edge of the Lake

Acrylic on board 123 x123cms

\$4,400



Sail away
Acrylic on board 123 x123cms
\$4,400

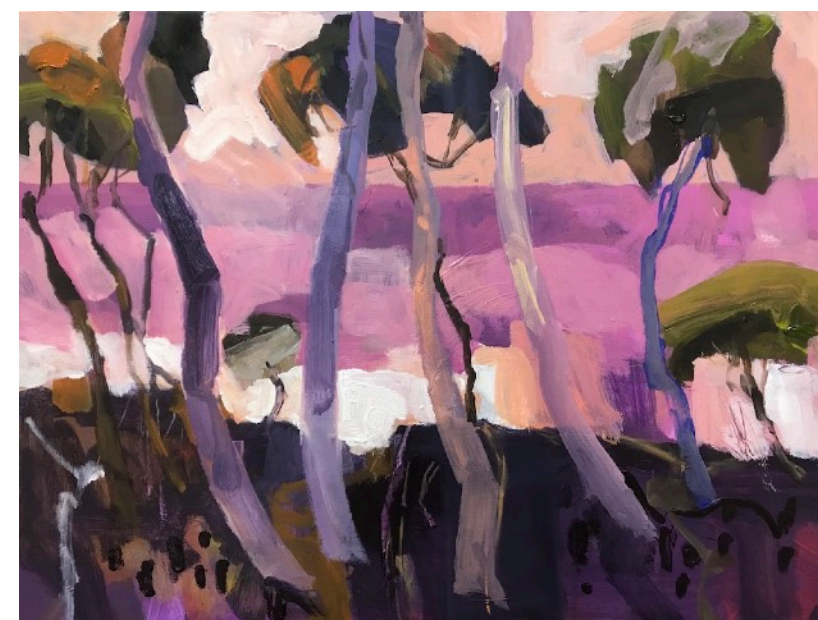




Last embers of winter light
 Acrylic on board
 43 x 43cms
 \$1,200



Afterglow
 Acrylic on board
 43 x 43cms
 \$1,200



Heading home
 Acrylic on board
 46 x 61cms
 \$1,500



Shadowplay

Acrylic on board 123 x103cms

\$4,000



Surely the dawn is coming
Acrylic on board 40 x45cms
\$1,300





New Horizon

Acrylic on canvas 42 x122cms

\$2,250



White Roads

Acrylic on canvas 42 x122cms

\$2,250



Long day's journey

Acrylic on board 123 x 123cms

\$4,400



Edge of the Lake

Acrylic on board 123 x123cms

\$4,400



Melting the Darkness
Acrylic on paper 40 x 40cms
\$1200



Twilight moments
Acrylic on board
43 x 43cms
\$1,200



Beyond the Sunset
Acrylic on paper 50 x 62cms
\$950



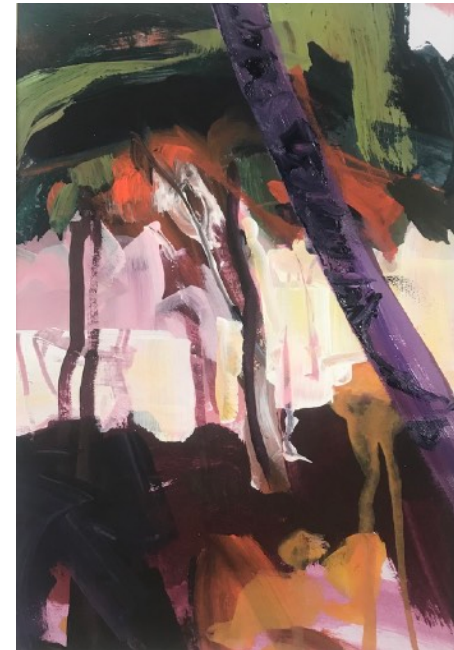
Good companions

Acrylic on paper
50 x 55cms
\$850



Day is done

Acrylic on paper
48 x 40cms
\$750



Sentinel

Acrylic on paper
50 x 55cms
\$850



Evening shadows

Acrylic on paper
50 x 55cms
\$850



Mountains are calling

Acrylic on board 123 x123cms

\$4,400



Finally arrived
Acrylic on board 43 x 43cms
\$1,200



Golden hour
Acrylic on board
43 x 43cms
\$1,200



Day is done
Acrylic and collage
on board
43 x 43cms
\$1,200

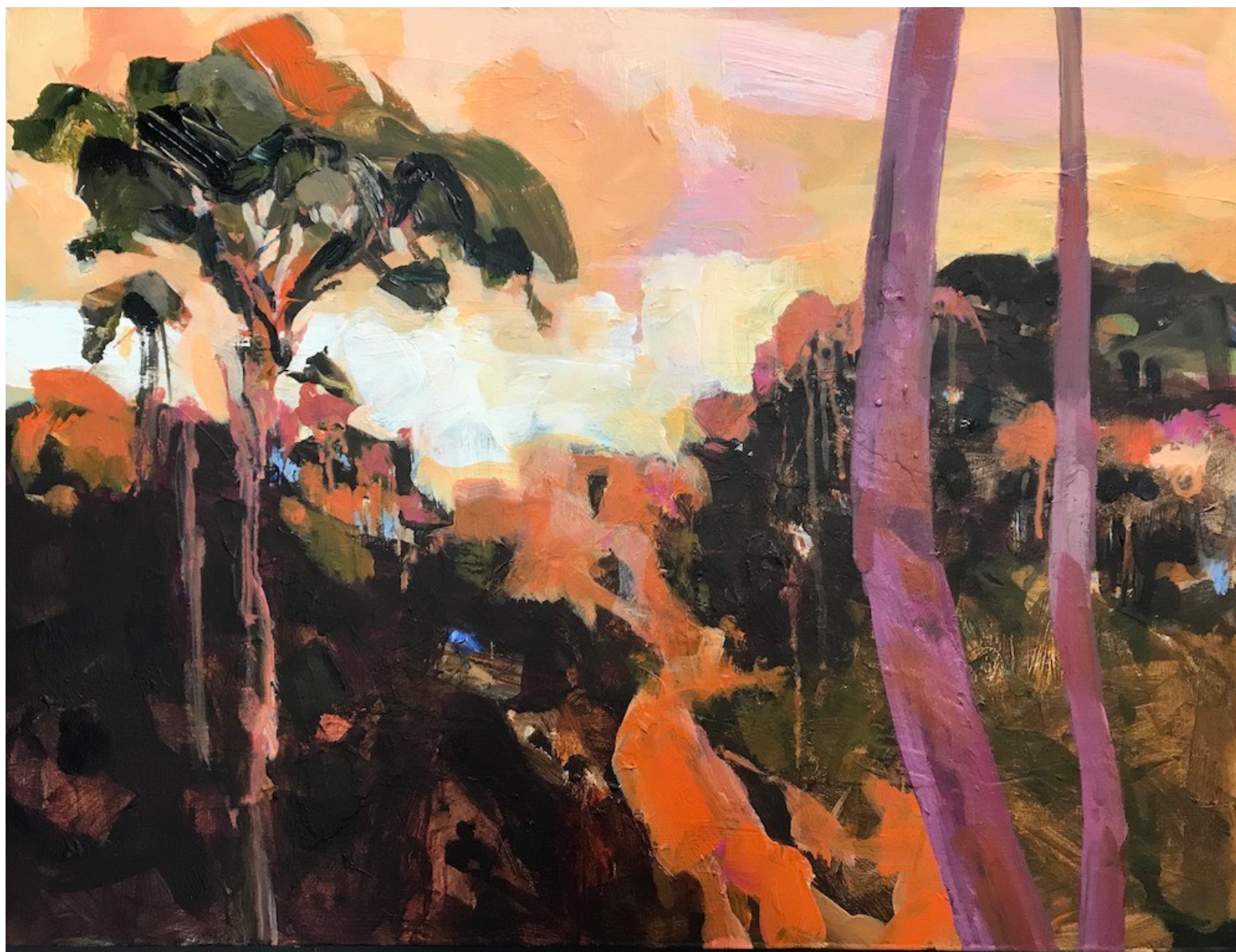


Above Tallow Beach
Acrylic on board
43 x 43cms
\$1,200



New day dawns
Acrylic on board
43 x 43cms
\$1,200





Pathway into daybreak
Acrylic on board 46 x 62cms
\$1,800



Welcome visitor
Acrylic on board 63 x 63cms
\$2,200





Odd fellows
Acrylic on board 43 x 43cms
\$1,200



Wild and free
Acrylic on board 33 x 43cms
\$1,100



Night owl
Acrylic on board 33 x 43cms
\$1,100



Twilight Bay

Acrylic on board 78 x 92cms

\$3,250



Beneath the Southern Sky
Acrylic on board 84 x 99cms
\$3,250



New day rising
Acrylic on board 84 x 99cms
\$2,850



Breathe

Acrylic on board 63 x 63cms
\$2,200



Ocean's roar

Acrylic on board 26 x 33cms
\$850

Unframed works



Leaving the city behind

Gouache on paper 30 x 42cms
\$450



Looking south

Acrylic on paper 30 x 42cms
\$450



Last light

Acrylic on paper 30 x 42cms
\$450



Walk in to the wild

Acrylic on paper 30 x 42cms
\$450



Quiet moment

Gouache on paper 30 x 42cms
\$450



Pathway to Eden

Gouache on paper 30 x 42cms
\$450



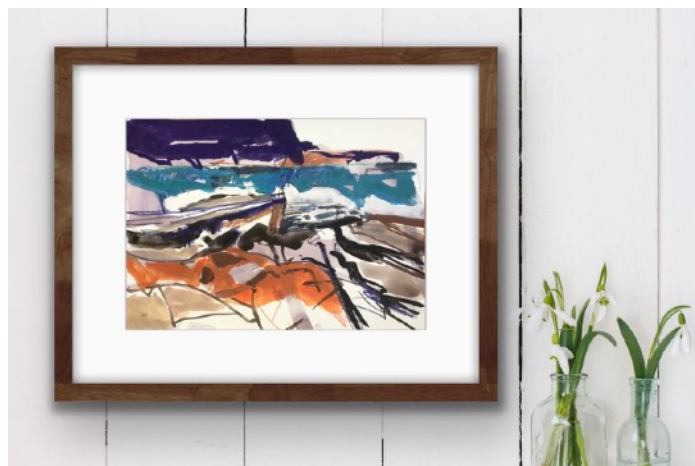
Turning tide

Gouache on paper 30 x 42cms
\$450



Sound of the ocean

Acrylic on paper 30 x 42cms
\$450



Framing suggestion

All works on paper will be dispatched in a sturdy post pack.
Shipping worldwide included for these unframed works.
All can be framed on request.
Framed size 52 x 61cms
\$650 plus shipping



Let your spirit soar

Acrylic on board 103 x 123cms

\$4,250



I can see forever

Acrylic on paper 77 x 96cms

\$2,250



Hawkehead morning
 Acrylic on board 84 x 99cms
 \$3,250



Land of dreams
 Acrylic on paper 58 x 77cms
 \$1,200

Moments in time

All artwork purchase enquiries from this catalogue
direct to the artist: Mike Staniford

mikestaniford@icloud.com +61 414 530 556

All works are framed in Tasmanian Oak and prices are in Australian dollars.
Payments can be made via direct bank transfer, by credit card or Paypal.

Shipping can be arranged worldwide.

An easy payment plan in instalments is available on request.

www.mikestaniford.com

Find me on instagram [@mikestaniford](https://www.instagram.com/mikestaniford)

